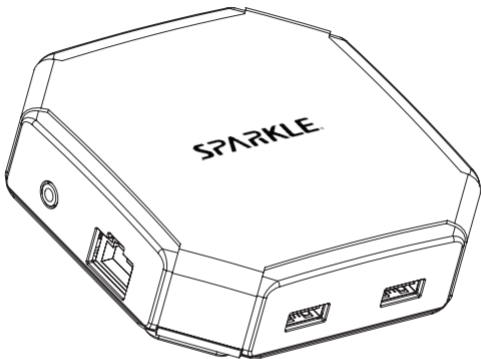


SPARKLE®



USB4 Travel Dock

TD-8140



USB4



USB-C



USB-A



HDMI



DP



Audio
Combo



Gigabit
Ethernet

Manual (English)

1. Includes	2
2. System Requirements	2
3. Product Specifications	3
4. Ports Layout	4
5. Hardware set up and Software settings	
Bus-powered (Powered by the computer)	6
Self-powered (External Power Supply, Recommended)	9

說明書 (正體中文)

1. 包裝內容	12
2. 系統需求	12
3. 規格說明	13
4. 連接埠配置圖	14
5. 硬體安裝與軟體設定	
Bus-powered (供電來自主機)	16
Self-powered (需外接電源供應，建議使用)	18
6. 安規與認證資訊	20

Includes

- USB4 Travel Dock x 1
- USB4 Cable(0.8m) x 1
- Storage Pouch x 1
- User Instructions x 1

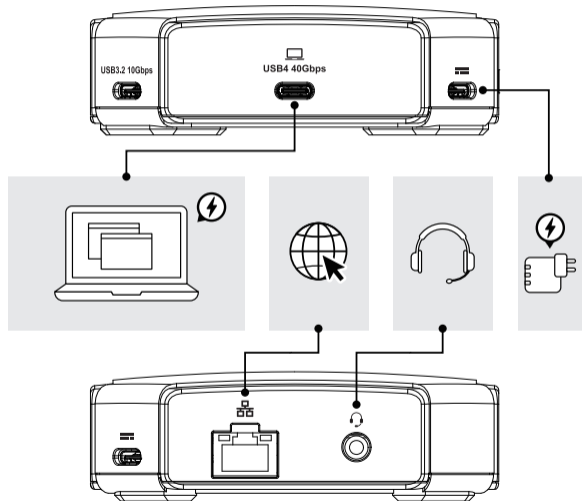
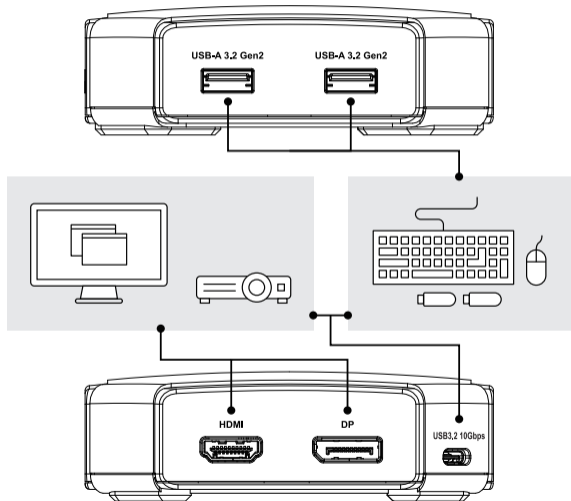
System Requirements

1. The host device must be equipped with a USB-C interface to ensure compatibility with this product.
2. The USB-C interface on the host device must support PD (Power Delivery) to utilize the Pass-Through charging function of this product.
3. The USB-C interface on the host device must supports DisplayPort Alternate Mode to enable the display function of this product.
4. The host must support dual monitor output to utilize the dual display function of this product.
5. The maximum output resolution depends on the DisplayPort Alternate Mode output specifications of the host.
6. The equipment connected to USB4 40Gbps port must complies with IEC 62368-1:2018 or EN IEC 62368-1:2020 + A11: 2020.

Product Specifications

Connectors	1 x USB4 with max. 85W host charging 2 x USB-A 3.2 Gen2 1 x USB-C 3.2 Gen2 (Support max. 8K@30) 1 x HDMI 2.0 (Support max. 4K@60) 1 x DisplayPort 1.4 (Support max. 8K@30) 1 x Gigabit Ethernet 1 x Audio Combo 1 x USB-C power input port
Max. Resolution	USB-C/USB4/Thunderbolt™ 3/4 (DisplayPort 1.4) • Single monitor: 8K@30Hz (DP or USB-C 3.2), 4K@60(HDMI) • Dual monitor: 4K@60 USB-C/USB4/Thunderbolt™ 3/4 (DisplayPort 1.2) • Single monitor: 4K@60 • Dual monitor: 4K@30 MFDP: Single monitor only, max. 4K@60
Power Supply	Bus-Powered Self-Powered (Pass-Through, max. power input up to 100W, max. power delivery output up to 85W)
Operation Temperature	0 - 35°C
Dimension	105mm x 105mm x 33mm
Compliance	CE, FCC, VCCI, BSMI

Ports Layout



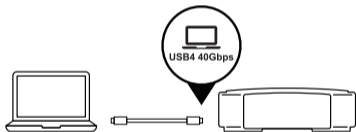
Hardware set up and Software settings

Bus-powered (Powered by the computer)

1. Connecting to the host

1-1. Plug the provided USB4 cable into the USB4 interface on this product.

1-2. Plug the other end of the USB4 cable into the Thunderbolt™ 3/4 or USB-C port on the host



- The USB-C interface on host must support Power Delivery to ensure proper functionality.

1-3. If the host system is equipped with Thunderbolt Control Center software, please ensure that the device is properly recognized and connected within the software settings to guarantee proper functionality.

2. Displays set up

2-1. For compatibility with an 8K resolution monitor, use the DisplayPort and USB-C 3.2 interfaces.

2-2. To set up dual 4K@60 displays, connect the DisplayPort or Type-C monitor to the product first, and then connect the HDMI monitor to the product.

- For the highest 8K resolution output, the host must support 8K output, and the display must support up to 8K resolution.
- Dual 4K@60 functionality requires the host to support dual 4K@60 output, and both displays must support up to 4K@60 resolution.
- Mac M1/M2 processor models (M1/M2 Macbook Pro and M1/M2 Macbook Air) do not support dual display function, while Mac M1/M2 Pro and Mac M1/M2 Max processor models do support dual display function.

3. Peripherals set up

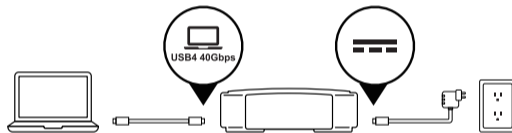
3-1. Connect the required peripheral devices to the corresponding I/O ports based on your need.

- When operating in bus-powered mode, in order to maintain stability, avoid connecting high-power consumption devices (such as external hard drives, phones, tablets) to the USB-C/USB-A port.
- In order to prevent data transmission error or missing, please plug in the USB-C PD Adapter during data transmission.

Self-powered (External Power Supply, Recommended)

1. Connecting to the host

- 1-1. Plug the provided USB4 cable into the USB4 interface on this product.
- 1-2. Insert the USB-C PD adapter into a power socket and connect it to the USB-C power-in port on this product.



- Minimum power rating of the adapter must be at least 60 watts or higher.

1-3. Plug the other end of the USB4 cable into the Thunderbolt™ 3/4 or USB-C port on the host.

1-4. If the host system is equipped with Thunderbolt Control Center software, please ensure that the device is properly recognized and connected within the software settings to guarantee proper functionality.

2. Displays set up

2-1. For compatibility Displays set up monitor, use the DisplayPort and USB-C 3.2 interfaces.

2-2. To set up dual 4K@60 displays, connect the DisplayPort or Type-C monitor to the product first, and then connect the HDMI monitor to the product.

- For the highest 8K resolution output, the host must support 8K output, and the display must support up to 8K resolution.
- Dual 4K@60 functionality requires the host to support dual 4K@60 output, and both displays must support up to 4K@60 resolution.
- Mac M1/M2 processor models (M1/M2 Macbook Pro and M1/M2 Macbook Air) do not support dual display function, while Mac M1/M2 Pro and Mac M1/M2 Max processor models do support dual display function.

3. Peripherals set up

3-1. Connect the required peripheral devices to the corresponding I/O ports based on your need.

- When operating in bus-powered mode, in order to maintain stability, avoid connecting high-power consumption devices (such as external hard drives, phones, tablets) to the USB-C/USB-A port.
- In order to prevent data transmission error or missing, please plug in the USB-C PD Adapter during data transmission.

包裝內容

USB4 隨身擴充塢 x 1

USB4 連接線 (0.8m) x 1

收納包 x 1

說明書 x 1

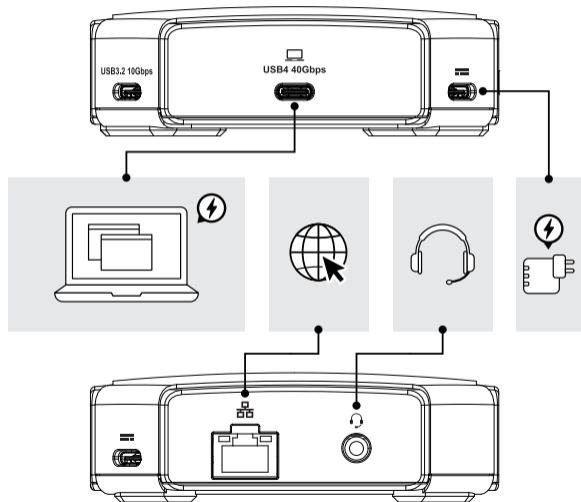
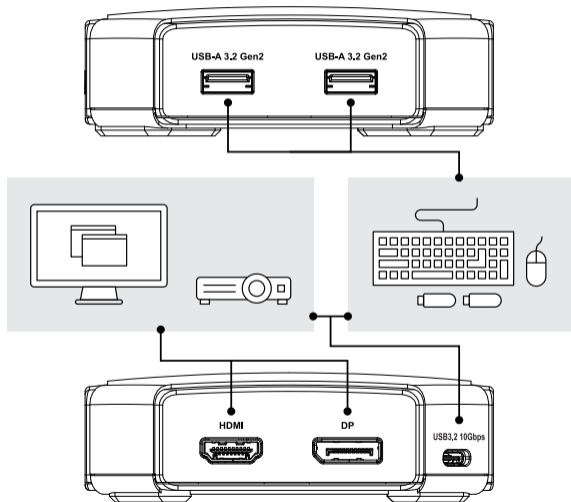
系統需求

1. 主機端必須具備 USB-C 介面。
2. 主機端的 USB-C 介面必須支援 PD 充電功能，才能使用本產品的 Pass-Through 供電功能。
3. 若要使用本產品的螢幕顯示功能，主機端的 USB-C 介面必須支援 DisplayPort Alternate Mode。
4. 如欲使用本產品的雙螢幕顯示功能，則主機端亦須支援雙螢幕輸出。
5. 最大輸出解析度取決於主機端的 DisplayPort Alternate Mode 輸出規格。
6. 接 USB4 40Gbps 埠的產品需要符合法規 IEC 62368-1:2018 或 EN IEC 62368-1:2020 + A11: 2020。

規格說明

連接埠	1 x USB4 (最高 85W 主機充電) 2 x USB-A 3.2 Gen2 1 x USB-C 3.2 Gen2 (最高 8K@30) 1 x HDMI 2.0 (最高 4K@60) 1 x DisplayPort 1.4 (最高 8K@30) 1 x Gigabit Ethernet 1 x Audio Combo 1 x USB-C power-in
最高解析度	USB-C/USB4/Thunderbolt™ 3/4 (DisplayPort 1.4) • 單螢幕：8K@30Hz(DP或USB-C 3.2), 4K@60(HDMI) • 雙螢幕：4K@60 USB-C/USB4/Thunderbolt™ 3/4 (DisplayPort 1.2) • 單螢幕：4K@60 • 雙螢幕：4K@30 MFDP：僅支援單螢幕，最高4K@60
供電	Bus-Powered Self-Powered (Pass-Through，輸入最高100W、輸出最高85W)
操作環境溫度	0 - 35°C
尺寸	105mm x 105mm x 33mm
安規	CE, FCC, VCCI, BSMI

連接埠配置圖

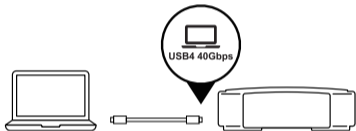


硬體安裝與軟體設定

Bus-powered (供電來自主機)

1. 連接產品與主機

- 1-1. 使用附帶的 USB4 連接線，將一端連接至裝置上的 USB4 介面。
- 1-2. 將 USB4 連接線的另一端插入主機的 Thunderbolt™ 3/4 或 USB-C 介面。



- 主機端的 USB-C 介面必須支援 PD 供電，以確保產品功能正常運作

- 1-3. 若主機系統有 Thunderbolt 控制中心軟體，請確保在軟體設定中，裝置已正確辨識並連接。

2. 安裝螢幕

- 2-1. 若欲搭配 8K 解析度螢幕，請使用 DisplayPort 與 USB-C 3.2 介面。
- 2-2. 若需設置雙 4K@60 螢幕輸出，請先連接 DisplayPort 或 Type-C 螢幕至產品，再將 HDMI 螢幕連接至產品。

- 最高 8K 解析度輸出需要主機支援 8K 輸出且顯示器支援至 8K 解析度。
- 雙螢幕 4K@60 功能，需要主機支援雙 4K@60 輸出，且顯示器皆可支援至 4K@60 解析度。
- Mac M1/M2 處理器機種 (M1/M2 Macbook Pro、M1/M2 Macbook Air) 不支援雙螢幕顯示功能，Mac M1/M2 Pro 與 Mac M1/M2 Max 處理器機種才可支援雙螢幕顯示。

3. 安裝周邊

- 3-1. 根據工作需求，將所需周邊裝置連接至相應的 I/O 連接埠。

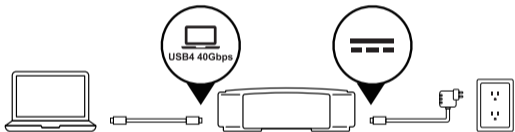
- 在 Bus-powered 模式下，請勿將高耗電裝置（如外接硬碟、手機、平板等）連接至 USB-C/USB-A 介面，以確保操作穩定性。
- 進行資料傳輸時，建議連接 USB-C PD 適配器，以避免傳輸失敗或資料遺失。

硬體安裝與軟體設定

Self-powered (需外接電源供應，建議使用)

1. 連接產品與主機

- 1-1. 使用附帶的 USB4 連接線，將一端連接至裝置上的 USB4 介面。
- 1-2. 請將 USB-C PD 適配器插入插座，然後將其連接至產品的 USB-C power in 連接口。



- 建議使用功率為 60W 以上的適配器。

- 1-3. 將 USB4 連接線的另一端插入主機的 Thunderbolt™ 3/4 或 USB-C 介面。
- 1-4. 若主機系統有 Thunderbolt 控制中心軟體，請確保在軟體設定中，裝置已正確辨識並連接。

2. 安裝螢幕

- 2-1. 若欲搭配 8K 解析度螢幕，請使用 DisplayPort 與 USB-C 3.2 介面
- 2-2. 若需設置雙 4K@60 螢幕輸出，請先連接 DisplayPort 或 Type-C 螢幕至產品，再將 HDMI 螢幕連接至產品。

- 最高 8K 解析度輸出需要主機支援 8K 輸出且顯示器支援至 8K 解析度。
- 雙螢幕 4K@60 功能，需要主機支援雙 4K@60 輸出，且顯示器皆可支援至 4K@60 解析度。
- Mac M1/M2 處理器機種 (M1/M2 Macbook Pro、M1/M2 Macbook Air) 不支援雙螢幕顯示功能，Mac M1/M2 Pro 與 Mac M1/M2 Max 處理器機種才可支援雙螢幕顯示。

3. 安裝周邊

- 3-1. 根據工作需求，將所需周邊裝置連接至相應的 I/O 連接埠。

- 在 Self-Powered 模式下，請勿同時連接兩個以上高耗電裝置（例如外接硬碟、手機、平板等），以確保操作穩定性。
- 在進行資料傳輸時，請勿突然拔除 USB-C PD 適配器的連接，以免造成傳輸失敗或資料遺失。

安規與認證資訊

設備名稱：USB4 40Gb 攜帶式集線器

型號 (型式)：TD-8140

單元	限用物質及其化學符號					
	鉛 (Pb)	汞 (Hg)	鎘 (Cd)	六價鉻 (Cr ⁶⁺)	多溴聯苯 (PBB)	多溴二苯醚 (PBDE)
電路板	○	○	○	○	○	○
電子元件	-	○	○	○	○	○
金屬機構件	-	○	○	○	○	○
塑膠機構件	○	○	○	○	○	○

備考1. "超出0.1 wt %" 及 "超出0.01 wt %" 係指限用物質之百分比含量超出百分比含量基準值。
備考2. "○" 係指該項限用物質之百分比含量未超出百分比含量基準值。
備考3. "-" 係指該項限用物質為排除項目。